



BYWATER HERRING

SALES & LETTINGS

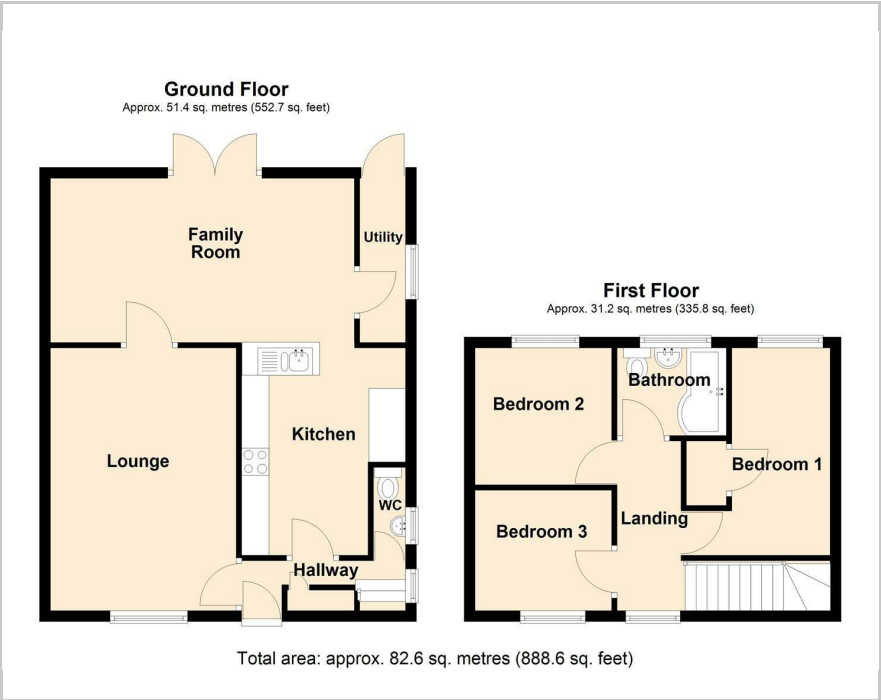
- A TRADITION OF TRUST -



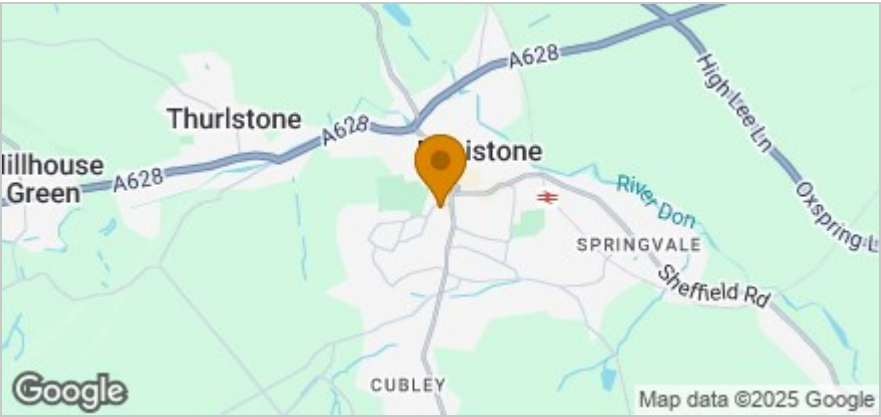
Park Avenue, Sheffield
£1,100 Per Month



Floor Plan



Area Map



Accommodation

- Charming 3-Bedroom Semi-Detached Home
- Long Term Let!
- Single Garage & Driveway For Two Cars
- Lovingly Cared For And Ready To Move Into
- Stylish Modern Living with Space For All The Family
- French Doors Leading Out To Spacious Garden
- Council Tax Band B
- Good Locals Schools
- 5 Minute Walk To Shops
- Great Location Close To The Train Station



| Energy Efficiency Rating | | |
|---|-------------------------|-----------|
| | Current | Potential |
| Very energy efficient - lower running costs | | |
| (92 plus) A | | |
| (81-91) B | | 85 |
| (69-80) C | 70 | |
| (55-68) D | | |
| (39-54) E | | |
| (21-38) F | | |
| (1-20) G | | |
| Not energy efficient - higher running costs | | |
| England & Wales | EU Directive 2002/91/EC | |

These particulars, whilst believed to be accurate are set out as a general outline only for guidance and do not constitute any part of an offer or contract. Intending purchasers should not rely on them as statements of representation of fact, but must satisfy themselves by inspection or otherwise as to their accuracy. No person in this firms employment has the authority to make or give any representation or warranty in respect of the property.